

PRODUCT CATALOGUE

THE EAGLE - FEATURES

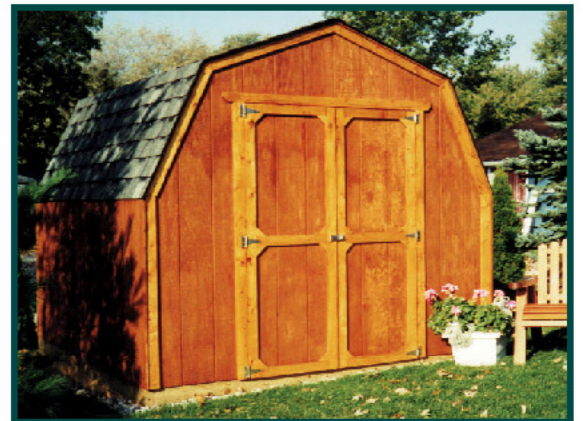
- Traditional "Barn" style
- Available Sizes: 8' x 8' and 8'd x 10'w
- Pine Trim and fascia (1" x 3")
- Standard T 1-11 Textured Siding (must be stained)
- Pre-cut and labeled components for easy assembly
- Explicit instructions and all required hardware
- Pre-assembled double doors (48"x72", 60" wide on 8x10)
- Easily installed in a few hours (2 people)
- Floor kit and shingles sold separately
- For more info call 1-800-606-8911 or www.gardendec.com



Item 503 - 8x10 Eagle
(Stained -paint/stain not incl.)

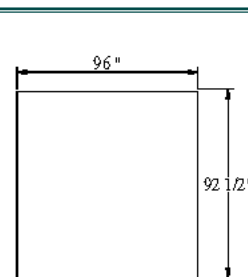
OPTIONS

Floor kits: Available as a special order item or ask a store representative for simple instructions to build your own.

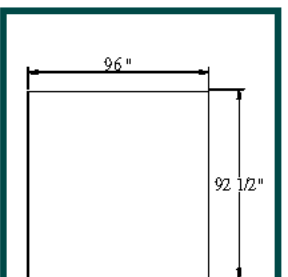


Item 503 - 8x8 Eagle
(Stained -paint/stain not incl.)

EAGLE KEY FACTS					
SIZE		8x8			8x10
Storage (Cu.Ft)		400			500
Weight (lbs)		500			600
Assembly Time (2 people)		4-6 hrs			6-8 hrs
ACTUAL FLOOR DIMENSIONS					
SIZE		8x8			8x10
Outside Dimension (l x w)		92 1/2" x 96"			92 1/2" x 120"
ITEMS FURNISHED BY HOME OWNER					
Exterior Stain		8x8			8x10
Siding		4 L			6
Trim		1 L			2 L
Shingles (bundles)		4			5
Cedar Shingles		5			6
PERTINENT DIMENSIONS					
Single Door Clearance: N/A Wall Peak Height: 75"		Double Door Clearance: 48" x 72", 60" wide for the 8'x10' Roof Peak Height: 86"			
MATERIALS DETAILS					
Siding	Standard -T 1-11 Textured Plywood Siding (must be painted) Panel product - has a vertical groove every 8"				
Trim	Select Grade 1" x 3" pine				
Roof Sheathing	7/16" OSB (Oriented Strand Board)				
Snds, Plates, Rafters	Under 100 sq. ft. - 2" x 3" Kiln Dried Spruce				
Floor Parts	2x6 PT (laid flat), 2 x 4 PT Joists (16" on centre), 5/8" Plywood Sheathing				



8 x 8 Floor Plan



8 x 10 Floor Plan



Recommended tools for this item - there is no cutting or trimming required.

