

PRODUCT CATALOGUE

THE RANGER SHED - FEATURES

- Gable style for plenty of overhead storage space
- Available Sizes: 8'x8', 8'w x 12'd
- T 1-11 Textured Siding (must be stained/ painted)
- Pine Trim and fascia (1" x 3")
- Pre-cut and labeled components for easy assembly
- Explicit instructions and all required hardware
- Pre-assembled extra wide 48"x72" double doors (60"x72" on 8'x12' model - doors on 8 ft side)
- Floor kit and shingles sold separately
- For more info call 1-800-606-8911 or www.gardendec.com



Item 508 - 8x8 Ranger

(Painted Blue w/White Trim-paint/stain not incl.)

ACCESSORIES

CHOOSE FROM THE FOLLOWING OPTIONS

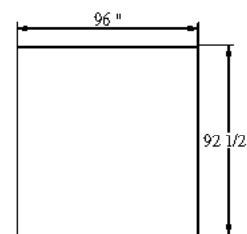
- Extra Double Door Kit (60" wide)
- Extra Window Kit
- Extra Arch window kit
- Extra Single Door Kit (34" wide)
- Extra Floor Kit



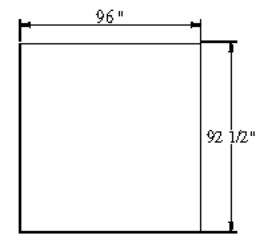
Item 508 - 8x8 Ranger

(Painted Grey w/White Trim-paint/stain not incl.)

RANGER KEY FACTS					
SIZE		8x8			8x12
Storage (Cu.Ft)		465			685
Weight (lbs)		500			750
Assembly Time		4-6 hrs			6-8 hrs
(2 people)					
ACTUAL FLOOR DIMENSIONS					
SIZE		8x8			8 x 12
Outside Dimension		92 1/2" x 96"			96" x 144"
(l x w)					
ITEMS FURNISHED BY HOME OWNER					
Exterior Stain		8x8			8 x 12
Siding		4 L			6
Trim		1 L			2 L
Shingles (bundles)		3			4
Cedar Shingles		4			5
PERTINENT DIMENSIONS					
Single Door Clearance: N/A		Double Door Clearance : 48"x72", 60"x72" (8'x12" model)			
Wall Peak Height: 75"		Roof Peak Height : 90"			
MATERIALS DETAILS					
Siding	T 1-11 - Textured Plywood Siding - must be painted Vertical Panel - groove every 8"				
Trim	Select Grade 1" x 3" pine				
Roof Sheathing	7/16" OSB (Oriented Strand Board)				
Studs, Plates, Rafters	2" x 3" Kiln Dried Spruce				
Floor Parts	2x6 PT (laid flat), 2 x 4 PT Joists (16" on centre), 5/8" Plywood Sheathing				



8 x 8 Floor Plan



8 l x 12w Floor Plan



Recommended tools for this item - there is no cutting or trimming required.

